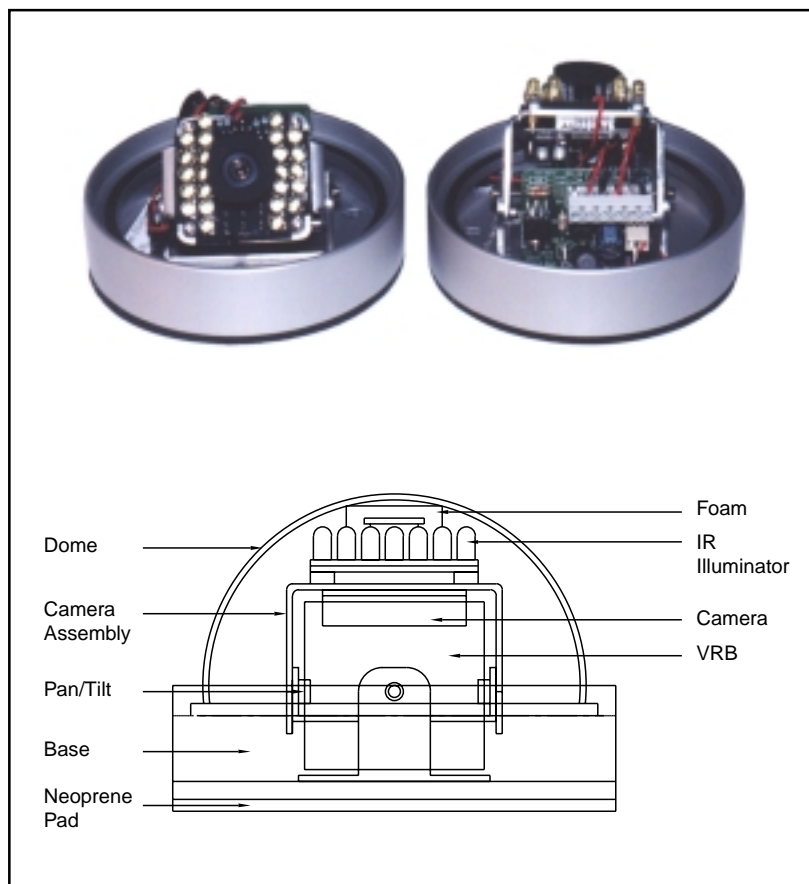


The HDI Series consists of a high performance camera and infrared illumination enclosed in a high impact dome housing. Available in standard 850nm and covert 940nm options, the 24 high performance IR LED's combine with our IR optimized CCD camera for outstanding day/night short-range surveillance. All models accept 12VDC or 24VAC (user selectable).

The HDI Series is hammer tough, weatherproof, and vandal resistant. The CNC machined aluminum base and polycarbonate dome combine to protect the unit from high impact forces.

The HDI Series is extremely versatile for indoor and outdoor installations in vandal prone locations. It can also fit over a single gang electrical box for integration with cable television modulators and other electronic options.



Applications:

- Schools / Prisons
- Access Control
- Home Automation
- Transit Vehicles
- Public Buildings
- Industrial Buildings
- Indoor / Outdoor



Above: The HDI Series is based on the tough vandal resistant design of our HD Series dome cameras. The HD Series is available in B&W and DSP color for applications that do not require infrared illumination. The HD Series can also be combined with our stand alone illuminators for greater distance coverage and versatility.

Specifications

IR Optimized Camera

TV System	EIA
Image Sensor	1/3" CCD Sony Image Sensor
Video Signal Output	1 V p-p, 75 ohm
Effective Pixels	537 (H) x 505 (V)
Sync. System	Internal
Resolution	420 TV Lines
Min. Illumination	0.1 lux @ F2.0 / 0 lux with IR
S/N Ratio	>50 dB
Gamma Correction	0.45
Electronic Shutter	1/60 to 1/100,000
Gamma Correction	0.45
Backlight Compensation	Manual Switch
Gain Control	AGC
Lens Options	3.6mm, 6mm, 8mm

Infrared Illuminator

LED Type	High performance 850 or 940nm
LED Beam Angle	Matched to lens
Number of LED's	24

General

Operational Range	-20°C to +50°C (-40°F to 122°F)
Humidity Range	Up to 95% relative humidity
Power Supply	12VDC or 24VAC
Power Draw	500 mA (Max.)
Lens Options	3.6mm, 6mm, 8mm
Dome	Polycarbonate (half-tint)
Base / Ring	CNC Aluminum Anodized (6061 T6)
Dimensions	ø4.63" (118 mm), 3.31" (76 mm) H
Weight	1.0 lbs (454g)

Model Numbers:

Camera with 850nm IR LED's - 25 foot range

Model	Description
HDI836AH	B&W, 420 lines — 3.6mm lens (70° FOV)
HDI806AH	B&W, 420 lines — 6mm lens (45° FOV)
HDI808AH	B&W, 420 lines — 8mm lens (33° FOV)

Camera with covert 940nm IR LED's - 15 foot range

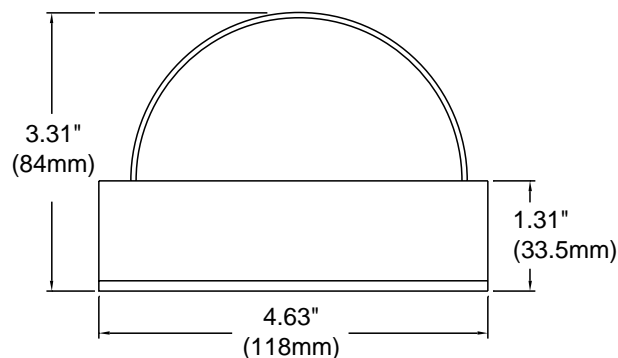
Model	Description
HDI936AH	B&W, 420 lines — 3.6mm lens (70° FOV)
HDI906AH	B&W, 420 lines — 6mm lens (45° FOV)
HDI908AH	B&W, 420 lines — 8mm lens (33° FOV)

24 VAC Plug-in Transformer:

Model	Description
PS2440	120 VAC to 24 VAC, 40VA, 60Hz

Features

- Illumination to 25 feet (7.5m) (15 feet for covert 940nm models)
- 850nm or covert 940nm options
- 24 IR LED's with IR optimized camera on double-gimbal head
- Weather and impact protected housing
- Vandal resistant / Hammer tested
- Rustproof anodized aluminum base
- Silver finish base / half-tint dome
- Universal 180° camera rotation
- 12VDC or 24VAC operation



Rainbow CCTV

INTERNATIONAL SPACE OPTICS, S.A.

Address: 2495 Da Vinci, Irvine, CA 92614 USA

Phone: (800) 654-5367 (949) 260-1599 • Fax: (800) 828-2031 (949) 260-1594

E-mail: rainbow@isorainbow.com • Internet: www.isorainbow.com

©2001 International Space Optics — 1170-P0123

Technology by Derwent Extreme

Non metric weights and measurements are approximate. Specifications are subject to change without notice.