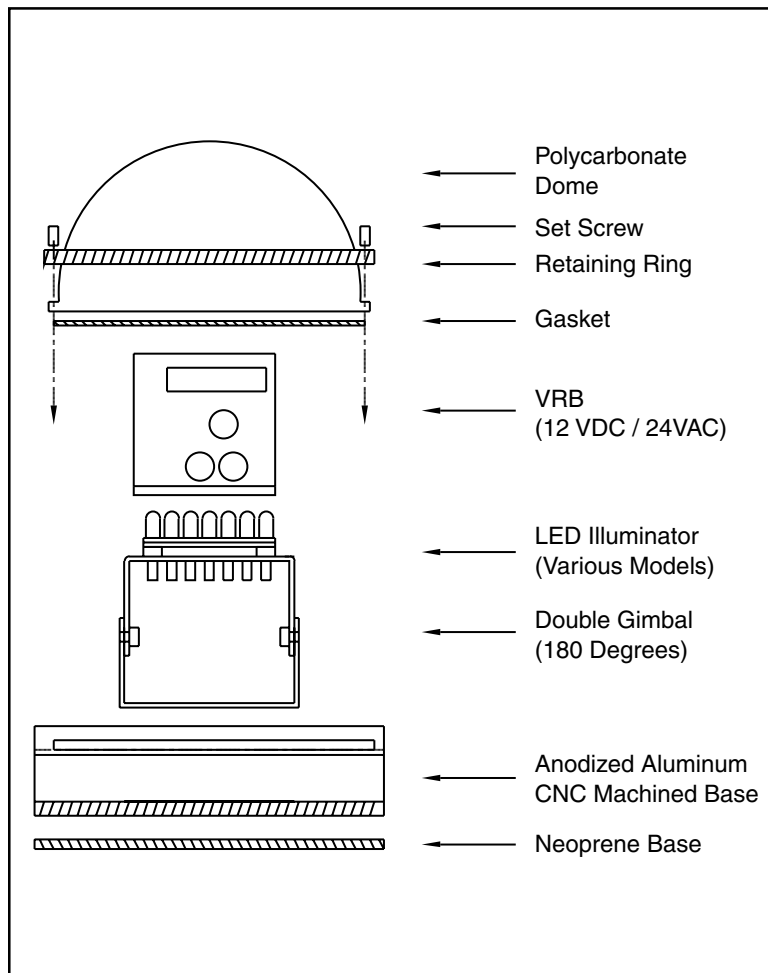


The IRL Series Infrared Illuminator is a versatile short range illuminator (up to 50 feet / 15 m) that easily installs onto ceilings, walls and standard electrical boxes. It is ideal for infrared enhancement of dark areas in restaurants, night-clubs, warehouses, and wherever video surveillance requires night-time performance enhancement under covert or semi-covert conditions.

The Hi-Impact Dome enclosure is hammer tough and weathertight. The exterior is a thick anodized CNC machined aluminum base with an impact resistant polycarbonate dome.

An anodized retaining ring locks the dome in place providing continuous rigidity against impact forces. Inside, 42 high-performance LEDs mounted to a heat-sinking double-gimbal can be easily adjusted to point in the desired direction.



The IRL Series can be installed as a covert infrared illuminator to enhance the night-time performance of our matching HD Series B&W surveillance camera. Installation is simple “plug-and-play” and adjusting the direction of the LED illuminator is quickly achieved. The rugged yet elegant design is versatile for indoor and outdoor installations in vandal prone locations. It can also fit over a single gang electrical box for home automation projects.



Above and left: The IRL Series is based on a tough vandal resistant design comprising of a polycarbonate dome and anodized CNC machined base that installs onto walls, ceilings, and electrical boxes. Matching HD Series infrared sensitive cameras make for attractive, non-obtrusive 24 hour surveillance systems.

The IRL Series is designed to mount over a single gang box to provide a flush appearance while leaving room inside the electrical box for connectors. The impact resistant dome can also be surface installed in minutes to all interior and exterior walls and ceilings.

A patent (pending) gimbal device allows full rotation of the LED head for positioning in any direction while also acting as a heat sink to transfer heat to the solid aluminum base.

Pre-harnessed wiring allows for plug & play installation with a standard 12 VDC or 24 VAC power supply.

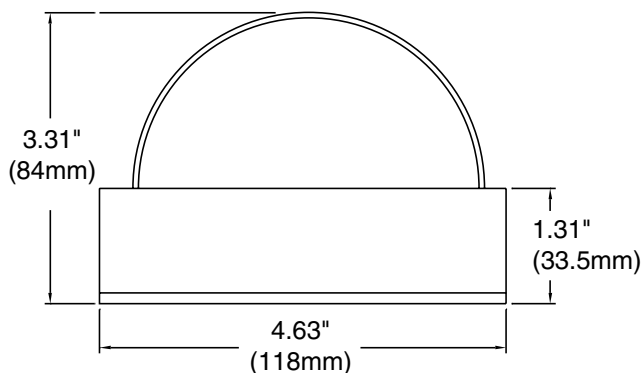
Specifications

Viewing Range	Up to 50 feet (15m)*
LED Type	High Performance 850nm / 940nm
LED Beam Angles	60 deg. (M), 30 deg. (N)
Number of LEDs	42
Pan/Tilt Device	Full rotational double gimbal
Operational Range	-4° to 122°F (-20° to +50°C)
Humidity Range	Up to 85% relative humidity
Power Supply	12 VDC or 24 VAC
Power Draw	600 mA (Max.)

Enclosure:

Dome	Polycarbonate
Base / Ring	CNC Aluminum Anodized (6061 T6)
Dimensions	ø 4.63" (118 mm) / 3.31" (84 mm) H
Weight	1.0 lbs (454g)

* View range, video signal, signal/noise ratio and field of view will depend on the sensitivity and spectral response of your camera/lens combination.



Features

- Illumination to 50 feet (15m)
- 850nm or covert 940nm options
- 30° or 60° models
- 42 IR LED's on double-gimbal head
- Weather and impact protected housing
- Vandal resistant / Hammer tested
- Rustproof anodized aluminum base
- Universal IR head rotation
- Compact at only 4.6" diameter
- Neoprene backing / Dustproof
- 5 minute installation
- 2-year warranty

Model Numbers:

<u>Model</u>	<u>Description</u>
IRL285A	30° Medium Beam, 850nm
IRL585A	60° Wide Beam, 850nm
IRL294A	30° Medium Beam, 940nm (covert)
IRL594A	60° Wide Beam, 940nm (covert)

Note: Aluminum finish, clear dome

Black finish available as special order on above items

Performance Notes:

1. Use good infrared sensitive cameras for better results.
2. 850nm models emit a slight red visible glow.
3. 940nm covert models are not visible, but require a camera with extended IR range to achieve the distance or our 850nm models.

Typical Range

IRL285A	30° Beam	Up to 50 feet
IRL294A	30° Beam	Up to 20 feet 940nm covert model
IRL585A	60° Beam	Up to 30 feet
IRL594A	60° Beam	Up to 12 feet 940nm covert model

Rainbow CCTV

INTERNATIONAL SPACE OPTICS, S.A.

Address: 200 McCormick Ave, Costa Mesa, CA 92626 USA

Phone: (800) 654-5367 (949) 260-1599 • Fax: (800) 828-2031 (949) 260-1594

E-mail: rainbow@isorainbow.com • Internet: www.rainbowcctv.com

©2010 International Space Optics

Y0802

Non metric weights and measurements are approximate. Specifications are subject to change without notice.